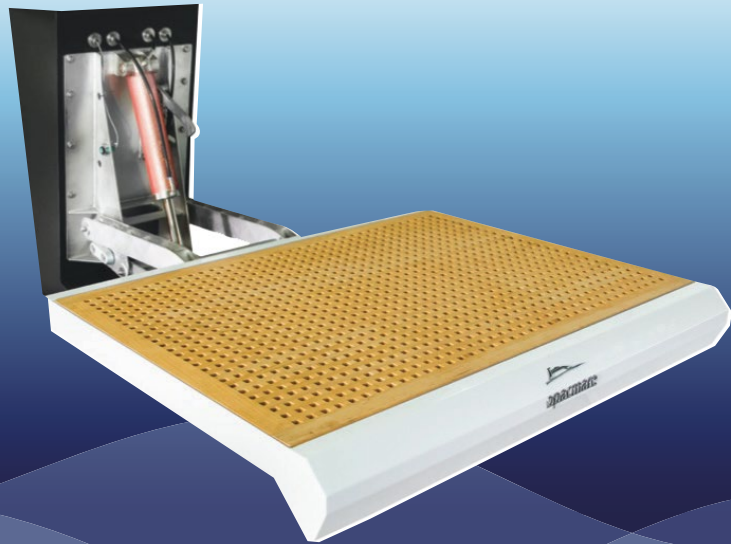


# SINGLE ARM TENDER LIFT 5227 loading capacity 600 Kg to 800 Kg



model	A (mm/ inch)	A1 (mm/ inch)	B (mm/ inch)	C (mm/ inch)	F (mm/ inch)	f (mm/ inch)	L (mm/ inch)	M (mm/ inch)	$\alpha$	R (mm/ inch)	S (mm/ inch)	capacity standard (kg/lbs)
5227/75.01	770 30"	805 32"	740 29"	735 29"	1020 40"	565 22"	305 12"	130 5"	11°	1275 50"	500 20"	600/1350
5227/95.02	650 26"	740 29"	935 37"	830 33"	805 32"	485 19"	320 13"	150 6"	0°	1275 50"	930 37"	800/1770
5227/95.03	770 30"	805 32"	910 36"	730 29"	1010 40"	300 12"	575 23"	300 12"	11°	1275 50"	500 20"	600/1350

Note: The declared lifting capacity is assured if the load is positioned in the middle of measure C. The loading capacity includes the total platform weight (at shipyard's care), the full loaded tender or the jet ski. Tendelift standard version is electro-polished only.

