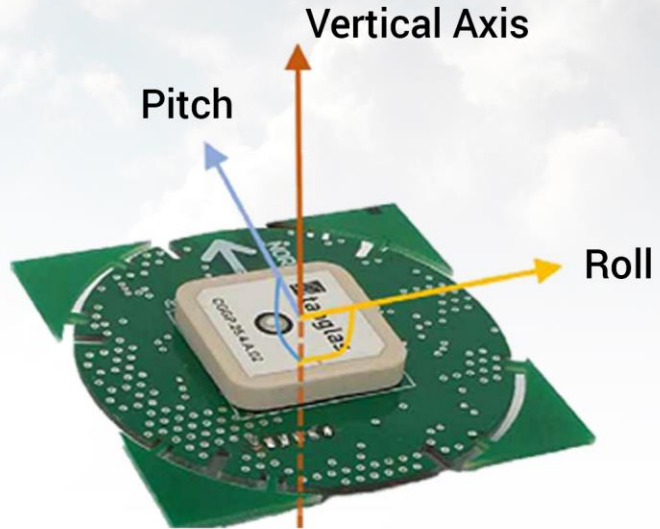


# ONWA<sup>®</sup>

MARINE ELECTRONICS



MODEL

# KA-GC9A

9-Axis Electronic Compass with  
built-in High Accuracy GPS Module

## FEATURES

- Low-Cost Solution for Heading Data
- Enhanced Performance
- User-Programmable
- Customizable GPS output sentences and baudrate
- Better Stability of Heading Output
- Real-Time Response Rate
- NMEA0183 Interface
- High-Grade Waterproof Housing
- Longevity of usage in the Marine Environment

# SPECIFICATIONS

## Interface (NMEA4.01)

**Baudrate:**  
4800

## Output sentences:

GPRMC, GPGSA, GPGGA, GPGLL, GPVTG, GPHDT (5Hz)

*\*Note: all output sentences are in intervals of 1 Hz unless specified*

## Electrical:

RS232, 18KV ESD

## Power Supply:

5~32VDC, Over-voltage and reverse polarity protected

## Power consumption:

450 mW

## Working Temperature:

Operating temperature: -30°C to +70°C

Storage temperature: -40°C to +85°C

## User Interface:

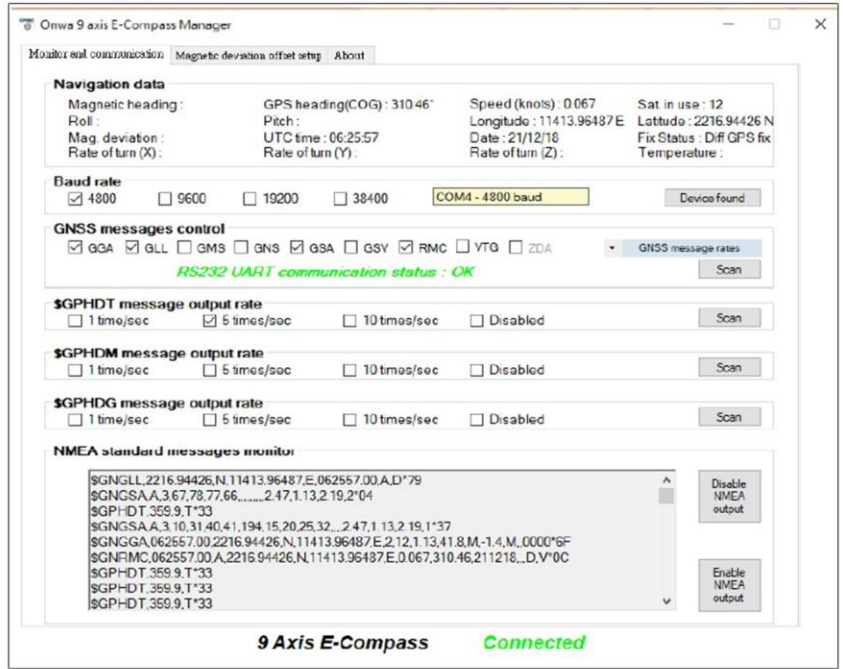
Uses 9-Axis E-Compass Manager

## UMI (Inertial Measurement Unit):

9-Axis (Features a GPS/Glonass receiver coupled with a 9-axis AHRS unit providing 3D orientation by integrating gyroscopes and data fusing with accelerometers and magnetometers)

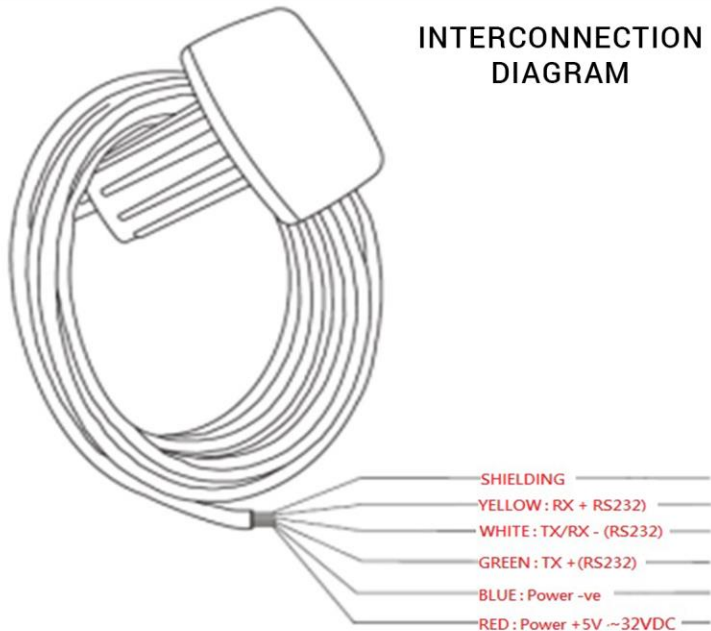
## Equipment List:

KA-GC9A with 10m cable 1 set



*\*Program output sentence and Baudrate with the 9-Axis Compass manager*

INTERCONNECTION  
DIAGRAM



DIMENSIONS

