

# ONWA<sup>®</sup>

MARINE ELECTRONICS



KP-38 (5-inch)



KP-39 (7-inch)

**MODEL**

# KP-38/KP-39

GPS Chart Plotter



**K-CHART**  
Free detailed sea map



Support C-Map MAX



Compatible with Navionics+



**GOTO TRACK NAVIGATION**  
Leads you back home



Multiple Display Modes



Proximity Waypoint Alarm



Perspective View



Different Color Palettes



SD Card System Update



Tide Table



Celestial

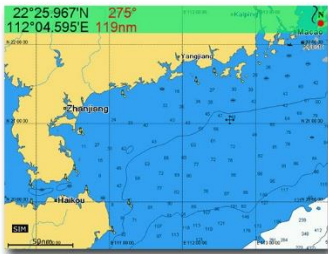


Display AIS Info

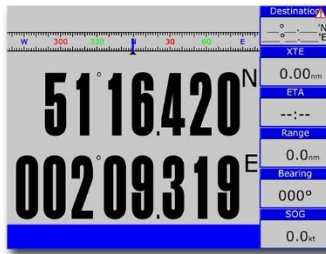
**IP66**  
Ingress Protection

**NMEA0183**  
NMEA Interface

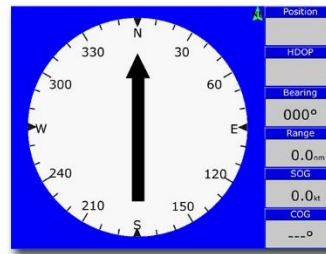
# ▶ DIFFERENT DISPLAY MODES



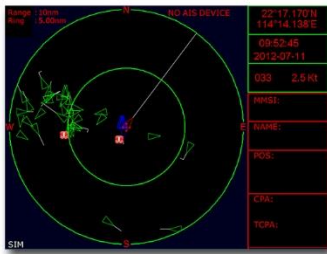
Plotter



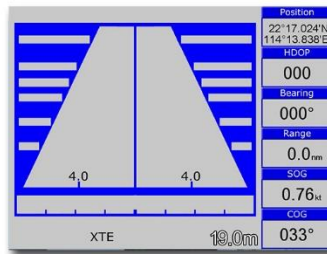
Navigation Data



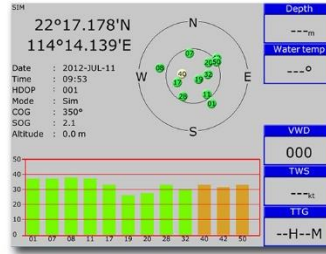
Compass



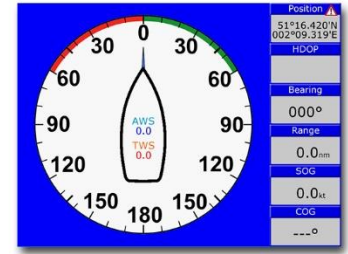
AIS



Highway



Satellite



Wind

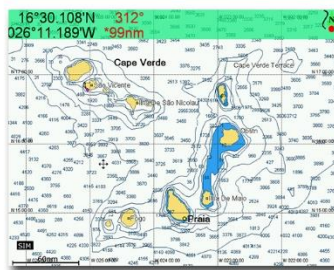
# ▶ GPS CHART PLOTTER

Compatible with the following mapping systems:



### K-Chart Mapping System

ONWA Chart Plotters are compatible with K-Chart Mapping and displays worldwide Electronic Charts that users can use for FREE.



### C-Map Max

ONWA Chart Plotters are also compatible with C-Map Max showing Nautical Charts



### Navionics+

ONWA Chart Plotters when used with Navionics+ charts shows Nautical Charts and Sonar Charts. Advance options also include: Highlight Shallow Area, Adjust Contour Density and Shallow Fishing Range

Standard  
Accessory



**GPS Patch Antenna**  
with 4m cable (SMA connector)  
Ingress Protection IP66

Optional  
Accessory



**KA-07**  
External GPS Antenna  
with 10m cable  
(Specify when ordering)

## PLOTTER CHARACTERISTICS

Waypoints/icons	12000 user waypoints with name, symbol 3 system waypoints: MOB, Start , Cursor 10 proximity waypoints
Routes	30 routes waypoint up to 170 tracks each, plus MOB and Track Navigation or GOTO Track modes
Tracks	8,000 points automatic track log;; 10 saved tracks (up to 8000 track points each) lets you retrace your path in both directions
Alarms	XTE, Anchor drag, arrival, speed, voltage, proximity waypoint, Timer and AIS (CPA and TCPA) alarm
Drawing	1000 Drawing Marks; 2000 Drawing Lines (40 points each); 1000 Drawing Place Name; 8 Colors for Drawing
Palette	Normal Daylight exposed to sunlight Night in dark environment NOAA paperchart colors Built-in Worldwide Tide data
Tides	Lat/Lon Worldwide
Position format	Compatible with K-Chart 2.0, K-Chart 3.0, C-Map Max and Navionics+
Basemap	Internal backup of user settings or external SD-card
External Map	5secs to 60 mins or 0.01 to 10nm 0.001 to 700nm On/off (Available for C-Map only) Sunrise/Sunset Moonrise/Moonset
User data storage	
Plot Interval	
Plotting scales	
Perspective View	
Celestial	

## NMEA SENTENCE SUPPORTED

INPUT: (Auto scan Baudrate)  
GGA, GLL, GSA, GSV, RMC, HDG, HDM, HDT  
VTG, ZDA, MTW, VWR, VWT, MWD, VPW, VHW  
TLL, TTM, VDO, VDM, GNS, MTA  
RMA, DBT, DPT, MWV, BWC, XTE, ZDL, WPL, AAM, APB, BOD, RMB, DSC, MDA, RPM, XDR

OUTPUT:  
Baudrate : Selectable 4800, 9600, 19200, 38400  
GGA, GLL, RMC, GSA, GSV, AAM, APA  
APB, BOD, BWC, BWR, DBT, DPT, HDT  
MTW, RMB, TLL, VTG, WPL, XTE, ZDA  
ZTG, ZDL, MWD, VPW, VWR, VWT  
Outputs for autopilot:  
APA, APB, BOD, XTE

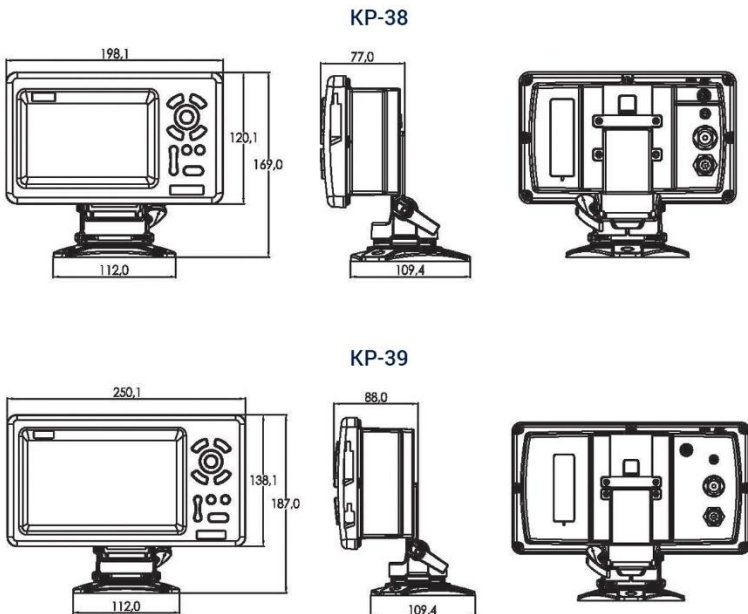
## AIS INTERFACE

AIS Data: RS232 output VDO, VDM, GGA, GSA, GSV and VTG  
AIS Input Baudrate: 38,400 from GPS Input Port

## POWER SUPPLY

10.5 to 30VDC, current drain 1.0A at 12V

## DIMENSIONS (DISPLAY UNIT)



## GPS RECEIVER CHARACTERISTICS

Receiver	50 parallel channel GNSS receiver continuously tracks and uses up to 50 satellites to compute and update your position
Acquisition time	Cold start: 29 seconds Hot start: 1 second
Update rate	1 second or 0.1 second selectable
Accuracy	Position: 3 meters(95%) without S/A Velocity: 0.1 meter/sec without S/A
SBAS	Supported
QZSS	Supported
Satellite System	Choice of 4 GNSS : GPS, Beidou, GLONASS, Galileo
Dynamics	Altitude: 18,000 m Velocity: 515 m/s WGS 84 & User defined
Datum	GPS Patch Antenna
Antenna	

## GPS INTERFACE

GPS Data	RS232 input/output, NMEA 0183 V3.01 and V4.11
GPS Input Baudrate	Auto Scan (4800, 9600, 19200 and 38400)
GPS Output Baudrate	Selectable among 4800, 9600, 19200 and 38400

## PHYSICAL

Size	KP-38: 169(H)mm X 198.1mm(W) X 77mm(D) KP-39: 187(H)mm X 250.1mm(W) X 88mm(D)
Weight	KP-38: 0.6Kg KP-39: 0.8Kg
Display	KP-38: 5-inch Color TFT dayview LCD 800x480 pixels KP-39: 7-inch Color TFT dayview LCD 800x480 pixels
Waterproofing	Display unit: IP66 Antenna unit: IP66
Temperature range	Display unit: -15°C to +55°C Antenna unit: -25°C to +70°C

## EQUIPMENT LIST

Display unit  
Quick manual  
Mounting Bracket  
GPS Patch Antenna with 4m cable (SMA connector)  
Standard Accessories Pack

## OPTIONAL ACCESSORIES

GPS antenna KA-07  
KC-2W (N2K to NMEA0183 Bidirectional converter)  
KW-360 Ultrasonic Weather Station  
KA-GC9A (Heading Sensor)

